

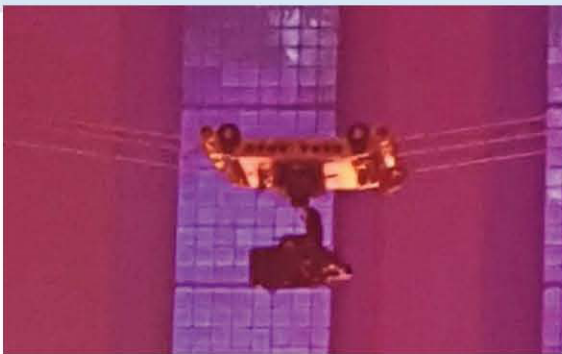
NEWTON is a versatile, lightweight 3-Axis gyro-stabilized remotehead, suitable for broadcast- and filmcameras but also for 3D-applications. This extremely rigid, water- and dust-protected system enables quick set-up with an integrated camera quick-release and it is silent in operation.

The multi-function DOMINION Control Unit provides the precision and control of the remote stabilized head, camera and lens via dual frequency wireless communication with a distance up to 1000m.

The NEWTON remotehead allows steady shots whilst in motion on a variety of devices, such as cranes, dollies or wire-cam systems as the 2-point system RocketCam.

# NEWTON

3-AXIS STABILIZED REMOTEHEAD  
FOR FILM- AND BROADCASTCAMERAS



## TECHNICAL DETAILS

WEIGHT	6,8kg
PAN-ROTATION	unlimited
MAX. SPEED PAN/TILT	180°/s
COMMUNICATION	RF Data-Link



## DOMINION CONTROL UNIT

WEIGHT	2,2kg
FREQUENCY	24000-24835 GHz
DISTANCE	up to 1000 m